

1 New DocViewer version (from Update II/2011 on)

Due to legal requirements, the size of SDS documents increased, so that they extend the storage capacity of a CD. Thus they are now stored on DVD.

Seeing that not all Mix PCs in body shops are provided with a DVD drive, but to make sure that the documents can be retrieved on all work places where necessary, this new DocViewer version gives the possibility to store selected datasheets onto a movable storage device. From this, the datasheets can be transferred to any PC.

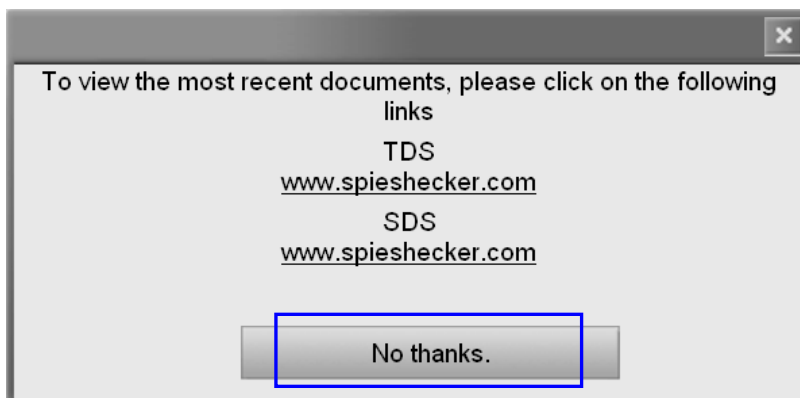
1.1 Procedure

1.1.1 On the PC with DVD drive

Install the DocViewer version that comes with the update CD II/2011.
Open the DocViewer (either from Start - Programs or out of CRplus)

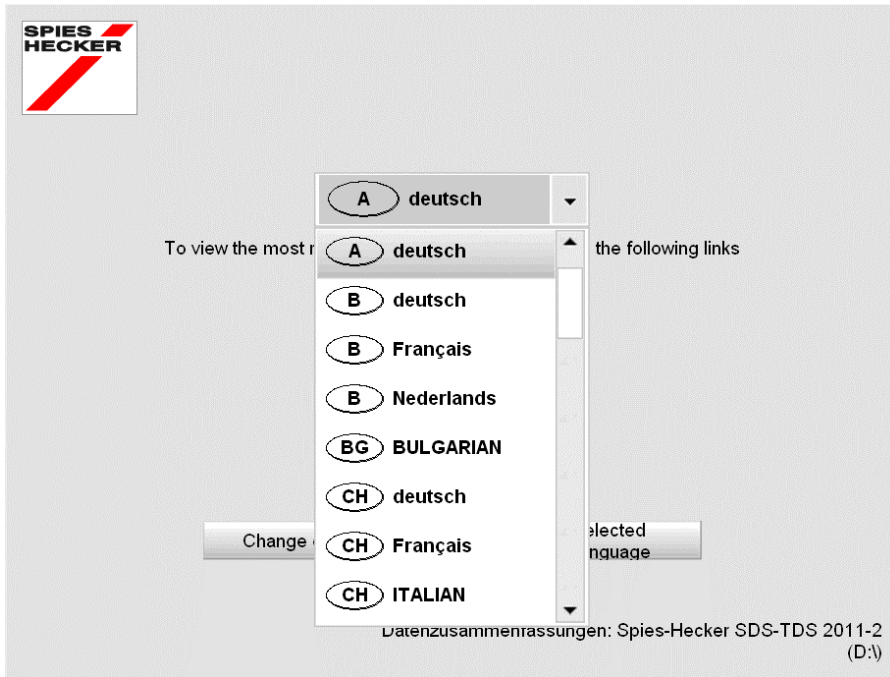


This screen opens



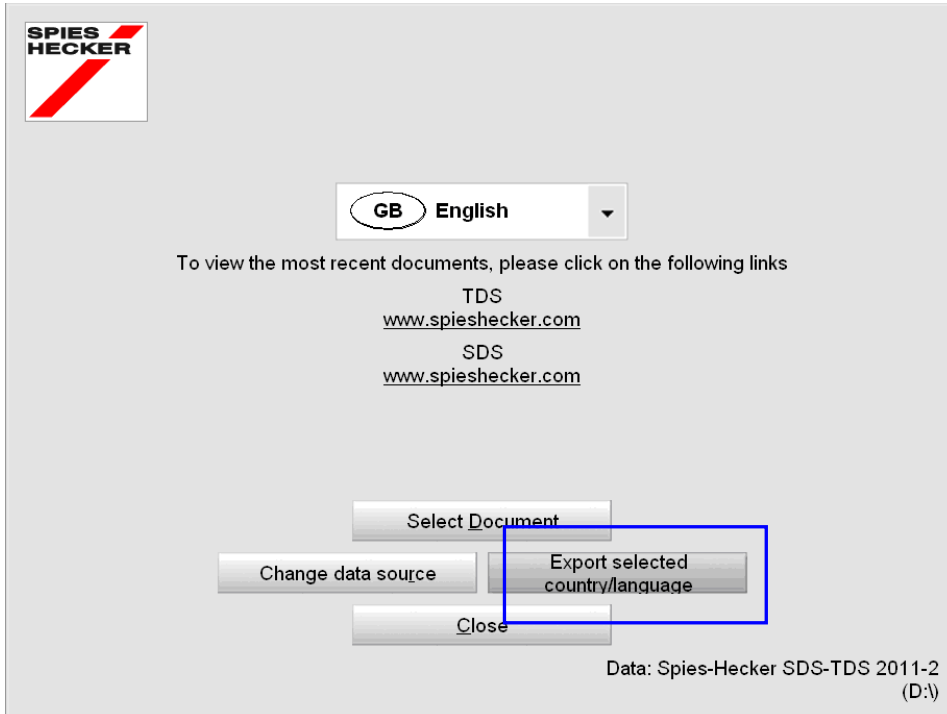
Click "No thanks".

In the following screen you are asked to insert the CD (CRplus CD), select the drive from the dropdown. This screen pops up:

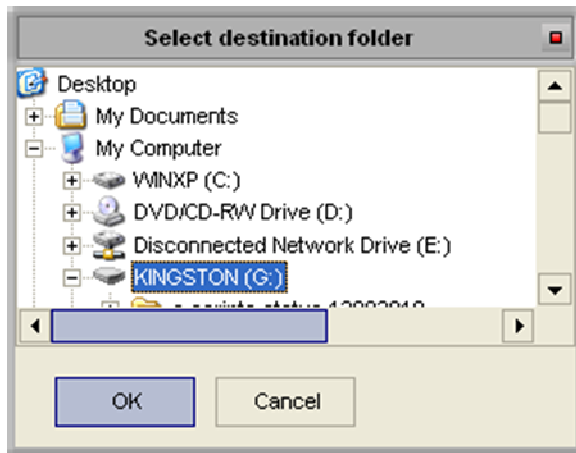


The default settings are "A deutsch" (German for Austria).

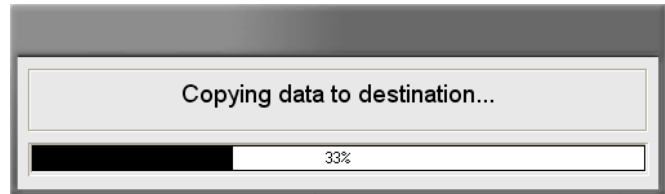
Select your required country – language combination from the dropdown and press "Export selected country/language".



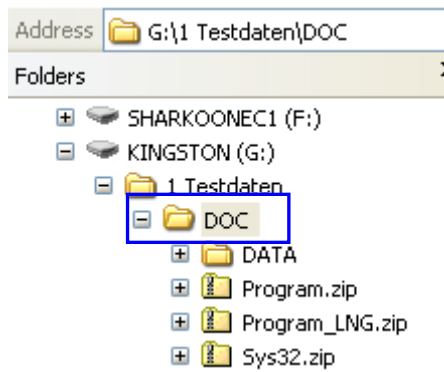
You will be asked for a destination, most likely you will select a USB-stick, but any other place is possible.



Press "Ok", the transfer takes some time.

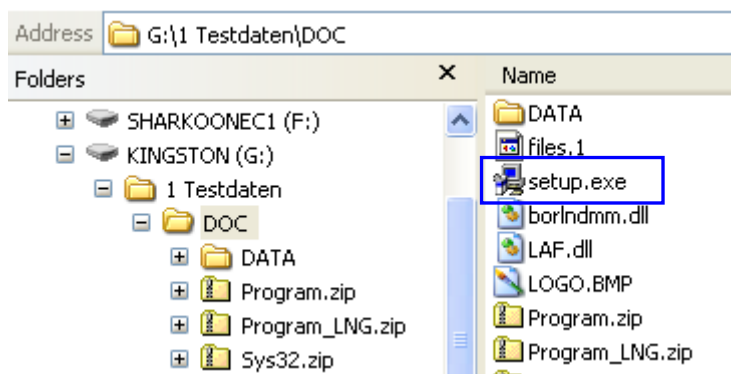


The exported folder is called "DOC":



1.1.2 Procedure on other PCs (without DVD-drive)

Copy the "DOC" folder from the movable storage device on any other PC, where the documents are required. Go into the folder and double-click "setup.exe" to install the new version on this PC as well.



1.2 Retrieve documents

Open DocViewer (either from Start - Programs or out of CRplus).

By default, the datasheets will be available that you exported before.

In case you insert a DVD with datasheets (or an earlier CRplus CD that contained datasheets) on this PC anyway, you have the possibility to change the data source:

